

- A 3x twist and lock shelf supports  
Optional
- B Optional Shelf
- C Table top
- D 6x PVC strips
- E 4x washers
- F 4x bolts
- G 4x side support beam
- H 2x curved beams
- I 4x supporting posts
- J Base

Please note: When building the counter start by building the counter upside down.

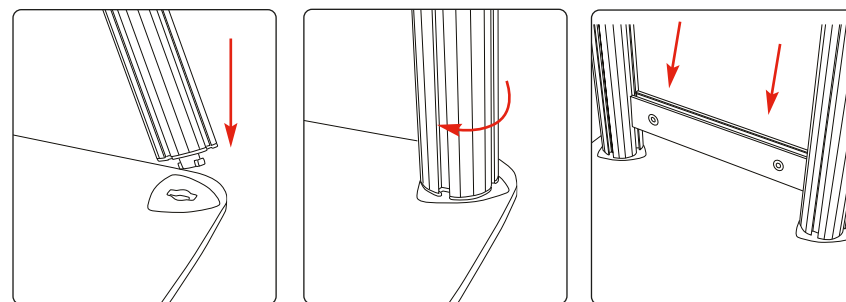
**Hardware specifications**

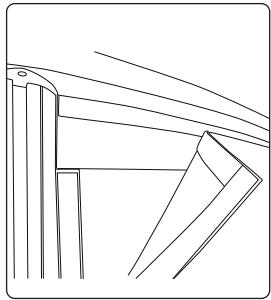
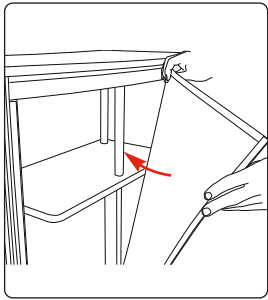
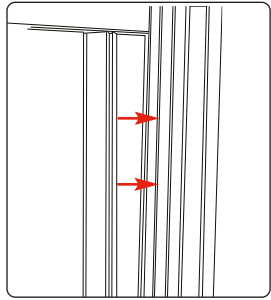
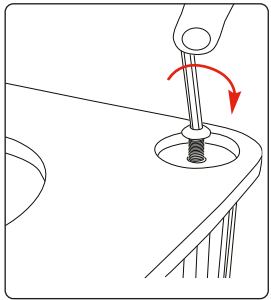
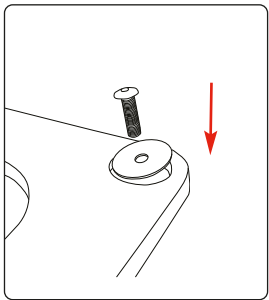
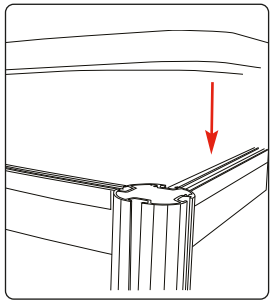
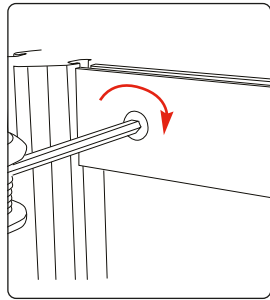
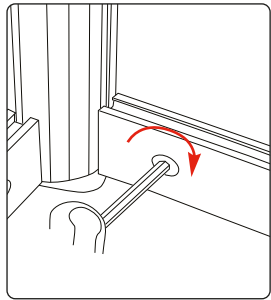
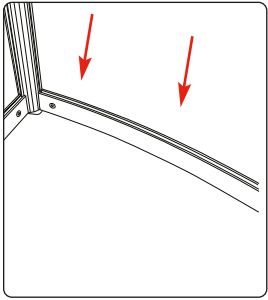
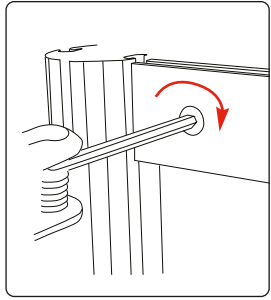
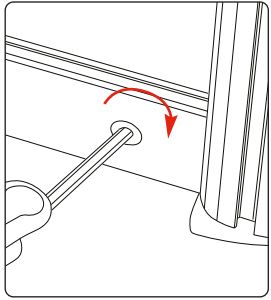
Assembled dimensions 1040mm (h) x 915mm (w) x 405mm (d)

**Graphic specifications**

Graphic Area: Front panel 1000(h) x 800 (w) (mm)  
Side panel x2 1000(h) x 230 (w) (mm)

Recommended graphic material 300 - 450 PVC





### Optional Shelf

